



BI & LITA®

2024

Make-Up
Catalogue



FACE



A TECHNOLOGY OF IDEAL MATCH WITH SKIN TONE



Universal Tone

CC CICA TONING CREAM WITH CENTELLA ASIATICA

- light cream texture • nude finish
- UV filter to protect from sun rays

CICA cream is a trend of the Korean cosmetics market. It combines the properties of day cream as well as a light tone cover. The technology of ideal skin tone match.

Enriched with active ingredients:

Centella Asiatica softens the skin, catches free radicals, fights against skin ageing and results in fresh and lifting look.

Encapsulated pigments of nude shade are released while contacting the skin to perfectly adapt the complexion and adjust to the skin tone.

UV filter protects from sunrays.

The result is healthy skin; the tone is as close to nude shade as possible.

20 ml



NATURAL INGREDIENTS



NO PARABENS, OILS AND SILICON



SPF 15

BB CREAM NO OILS AND SILICON

- the formula is free of oils and silicon
- the BB cream coverage is of a medium rate
- conceals redness, small pigment spots, enlarged pores and minor rash

Such active ingredients as Pre- and Probiotics Ecoskin Complex stimulate the development of stable skin flora. Green pigments are eco-friendly and even help smooth the tone and relief of your skin.

30 ml



MATT LIQUID POWDER

- a 'powder-in-cream' effect
- oily shine control
- SPF 15 is a skin photo ageing protection
- does not require any extra usage of face powder
- for all skin types

30 ml

Liquid powder creates a light and thin coverage, mattifies the skin and evens its tone. Based on natural minerals, the powder does not overdry the skin and covers it with light and velvety veil. The powder is enriched with **Sebaryl® complex** which eliminates oily shine and narrows the pores. Colourless liquid powder aims at mattifying the skin which does not require any camouflage, that is why it is suitable for those people who prefer a perfectly natural skin look with no oily shine.



LIFTING FOUNDATION WITH HYALURONIC ACID TONE

- conceals skin imperfections and evens the tone
- provides a lifting effect
- no mask effect
- contains hyaluronic acid
- not wiped off after touching
- for all skin types

30 ml

The cream contains 100% natural pigments which adjust to natural skin tone.

Tens'up lifts the skin and has a long-lasting anti-ageing effect due to the improvement of collagen synthesis.

Hyaluronic acid has a specific action, enters deep epidermis layers and pushes out wrinkles.



VELVET SKIN FACE FOUNDATION

- velvety coverage
- matte effect
- perfect covering and camouflage property
- conceals pigmentation
- for all skin types

30 ml



NUDE EFFECT INVISIBLE MAKEUP FACE FOUNDATION

- no make-up effect
- evens the skin tone
- conceals imperfections
- makes pores less visible
- flattens small lines
- universal tone for all skin shades

30 ml

COLOR CORRECTION FACE CC-CREAM

- corrects complexion changes
- conceals imperfections
- camouflages pale skin shade a
- provides radiance
- universal tone for all skin shades

30 ml

* 2 packaging options



MOISTURE + NOURISHMENT



 Classic

MOISTURE + NOURISHMENT FOUNDATION 2 IN 1 WITH VITAMIN E

- moisturizes and nourishes dry areas
- conceals imperfections
- making the skin look visually smooth
- contains **peach oil and vitamin E**
- ideal for dry skin

The foundation formula perfectly nourishes and moisturizes the skin, ideally adjusts to all complexion peculiarities. Evens the skin tone and conceals signs of fatigue.

The foundation provides even coverage, does not clog the pores up and enables the skin to 'breathe'.

30 ml

35 ml

* 2 packaging options

NEW!

DEVELOPED FOR FAIR SKIN





IDEALISTA FOUNDATION PERFECT SKIN

- creates an 'ideal' skin effect
- visually evens the skin conceals pores and fine lines
- colour filter pigments readjust colour balance and instantly refresh the face
- the finish is fresh and shiny

IDEALISTA perfect formula evens the skin tone, visually smooths the relief, conceals enlarged pores and camouflages imperfections.

The result is fresh and healthy skin.

20 ml



PHOTOSHOP-EFFECT BB FACE CREAM

- **Photoshop effect**
- instantly refreshes the skin tone and moisturizes your skin
- visually conceals skin imperfections
- SPF 15 UV-protection
- universal foundation for any skin shade

30 ml

* 2 packaging options



MATT SKIN EXPERT BB MATT CREAM FOR NORMAL AND OILY SKIN

- evens the microrelief and conceals skin defects
- camouflages unwanted shine
- creates a matte finish
- adjusts to skin tone
- ideal for oily and normal skin
- universal foundation for any skin shade

30 ml

* 2 packaging options



PERFECT RADIANCE TINTING BB HIGHLIGHTER FOR YOUNG SKIN

- camouflages skin disorders and imperfections
- creates delicate magical shimmering
- helps create impressive make-up
- perfectly moisturizes your skin
- eliminates skin dryness and flaking

30 ml

* 2 packaging options

FACE

BB CREAMS

ONE CREAM AND
7 ADVANTAGES!



BB cream

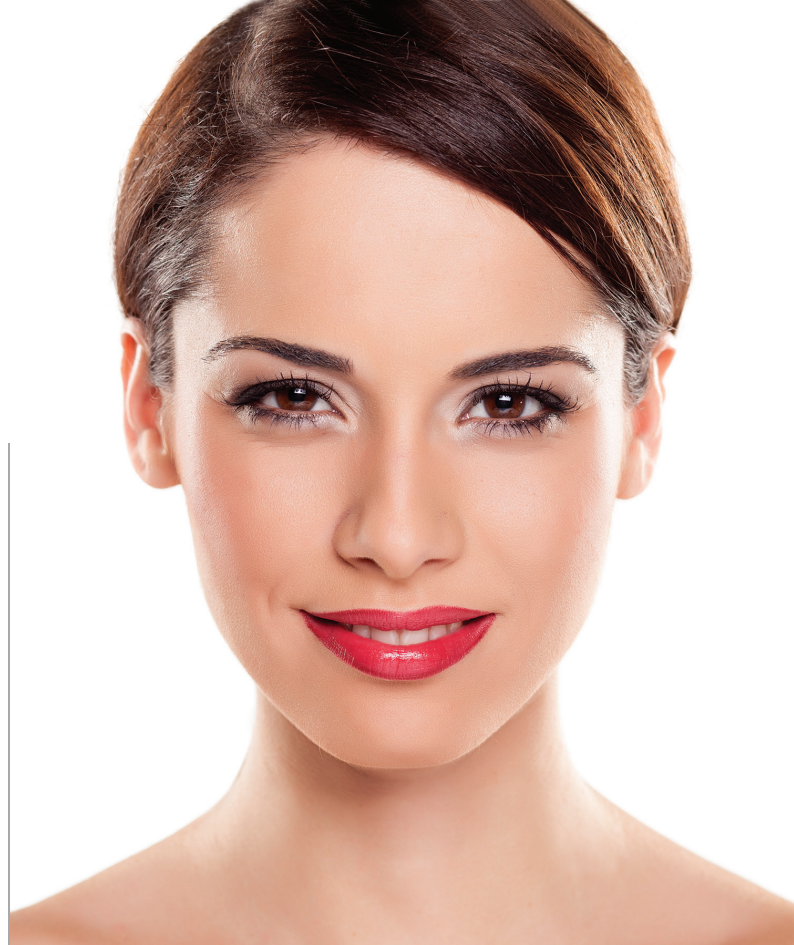
BB FACE CREAM DAY COMPLEX CARE 7 IN 1

- 1 – perfectly evens the skin tone and surface
- 2 – intensively moisturizes
- 3 – extensively nourishes
- 4 – smooths out wrinkles
- 5 – provides skin radiance
- 6 – protects the skin from sunrays – SPF15
- 7 – non-comedogenic

30 ml

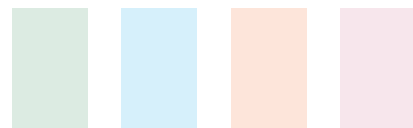
* 2 packaging options

No need to apply several cosmetic products to face skin (day cream + foundation) because all it takes is BB cream.



LAB
COLOUR

MakeUp Primer
COLOR CORRECT





**COLOUR CORRECT
GREEN
CORRECTING
MAKE-UP PRIMER**

- counteracts redness
- conceals face inflammations and spider veins
- evens skin microrelief
- eases further application of foundation

20 ml



**COLOUR CORRECT
BLUE
CORRECTING
MAKE-UP PRIMER**

- conceals sallowness and pigment spots
- brightens up the skin tone
- flattening out pores and roughness
- eases further application of foundation

20 ml



**COLOUR CORRECT
PEACH
CORRECTING
MAKE-UP PRIMER**

- eliminates a problem of dull skin shade
- evens the skin relief
- creates fresh and rested face look
- eases further application of foundation

20 ml



**COLOUR CORRECT
LUMINIZING
CORRECTING
MAKE-UP PRIMER**

- effect of glowing skin
- visually smooths out fine lines
- provides a feeling of smoothness and silkiness
- eases further application of foundation

20 ml



INSTANTLY SMOOTH SKIN HD MATTIFYING FOUNDATION

- fills up skin irregularities and evens its relief
- prevents oily shine
- creates velvety matte skin
- enables to achieve a smooth skin effect
- provides make-up endurance

30 ml

* 2 packaging options



BREATHING LEVELING FOUNDATION PRIMER

- provides easy further application of foundation or face powder
- fills up skin microrelief, fine lines and pores
- enables skin breathing
- quickly absorbed

30 ml

* 2 packaging options



CORRECTING BLUR FOUNDATION

- prepares the skin for creating a perfect make-up
- a blur focus effect
- 'erases' wrinkles
- conceals visible pores and skin irregularities
- increases make-up endurance
- your skin gets even and smooth
- suitable for all skin types

30 ml



FOUNDATION-CORRECTOR FOR PROBLEM SKIN

- does not clog the pores up
- conceals imperfections
- provides even cover
- a convenient spout for spotting

Contains such active ingredient as **zinc and niacinamide** which regulate sebaceous glands function and dry rash up.

30 ml



UNDER-EYE CONCEALER FOR DARK CIRCLES

- camouflages dark under-eye circles
- visually refreshes the face
- perfectly evens the skin tone
- no dry skin
- no mask effect
- **contains aloe latex**

HIGH PIGMENT FORMULA WITH PERFECT CAMOUFLAGE PROPERTY

15 ml



LAB
COLOUR

BETTER THAN SLEEP



CAMOUFLAGE CONCEALER BETTER THAN SLEEP

- high camouflage property
- conceals disorders
- eliminates signs of fatigue and poor sleep
- delicately illuminate the skin
- does not point out the wrinkles
- ideally shades and merges into the skin

5 ml



NO FILTER FACIAL CONCEALER

- camouflages redness, inflammations and pimples
- camouflages dark under-eye circles
- creates a matte finish
- eliminates signs of fatigue
- universal foundation instantly adjusts to any complexion
- **contains kiwi fruit extract**

20 ml

NATURAL MATT FINISH!



NEW

* with mirror



MATT FACE POWDER spf 15

- gives a natural matt finish
- smooths the surface of the skin
- nonclogging
- UV filter protects the skin from photo-aging

9 g



01
porcelain



02
light beige



03
sandy beige

SMOOTH AND RADIANT SKIN



POWDER STROBING LET'S SHINE

- illuminating and wet skin effect
- highlights key points in make-up
- shapes facial contour and volume
- makes the skin look healthy and fresh

10 g

INFORMATION

Strobing, a make-up technique, works like magic as it creates an expressive face radiance, makes its volume more extended and also creates a wet glow effect. Strobing highlights key points in make-up.

STROBING APPLICATION SCHEME



BEST
SELLER

Gold



Crystal

SKIN GLOW HIGHLIGHTER

- creates an effect of skin freshness and radiance
- points out skin features
- creamy texture
- easily applied and shaded
- helps regulate radiance intensity

15 ml

Glow
On01
Blooming02
SparklingPROVIDES
SKIN RADIANCEOPENS UP
THE EYESEMPHASIZES
CHEEK-BONESMAKES YOUR
FACE LOOK
EXPRESSIVE

LUMINIZER GLOW ON

- delicate and extremely natural skin radiance
- merges into the skin without any abrupt colour transition
- provides make-up completion

5 ml

секрет
СИЯНИЯBEST
SELLER

AMAZING SHINE CREAM HIGHLIGHTER with Cloudberry Seed Oil & Vitamin C

- provides astonishing radiance
- instantly transforms your skin
- conceals signs of fatigue
- struggles with dull skin
- contains vitamin C and cloudberry seed oil
- suitable for application to the whole face surface as well as some parts of it.

30 ml



MELTING BLUSHES

- makes the face look fresh and rested
- **mousse consistency**
- does not rub off easily and doesn't peel
- rich colour – high concentration of colour pigments
- easily applied and blended
- natural shades
- perfect for creating a monochrome make-up

30 ml

15 ml



MAKE-UP FIXING SPRAY

- fixes the make-up
- makes the face look fresh and rested
- alcohol free
- eliminates excessive powder
- **contains chamomile extract**
- suitable for application right after make-up completion and its update during the day

100 ml



EYES

LUXURIOUS
AND VOLUME
EYELASHES –
ENSLAVE BY ONE
LOOK!



MAJESTIC VOLUME MASCARA

- majestic volume and super length
- silicone brush perfectly separates and curls each eyelash
- no clumps
- no flaking and smudges
- no heavy eyelashes
- contains rice wax which makes your eyelashes smooth and glossy

Made with Chromavis ingredients (Italy)

12 ml

EYELASHES
NUMEROUS
MULTIPLICATION
EFFECT!



EYELASHES MULTIPLICATION EFFECT ARGAN OIL MASCARA

- eyelashes multiplication effect
- maximum volume
- long and separated eyelashes
- silicone brush carefully and evenly colours even the most unruly eyelashes
- **contains argan oil** which nourishes deep and strengthens each lash

Made with Chromavis ingredients (Italy)

12 ml

FALSE
EYELASHES LIKE
SEMI-PERMANENT
ONES!



FALSE EYELASHES RED QUEEN MASCARA

- a volume effect of semi-permanent eyelashes
- open glance + elegant curve + fantastic length
- MEGA volume brush – the largest one in the collection
- the mascara is enriched with natural wax for eyelashes smoothness

Made with Chromavis ingredients (Italy)

12 ml



LUXURY COLOR COLORFUL MASCARA

Dark brown mascara –

is a wonderful decision for day nude make-up. It looks natural on eyelashes, softens the glance, provides it with mystery and at the same time emphasizes expressiveness. Dark brown mascara is considered to be universal since it is suitable for any eye shape and colour.

12 ml

LUXURY COLOR COLORFUL MASCARA

Ultra black mascara –

is a perfect solution for smoky eyes make-up. It can be combined with the darkest and the brightest eyeshadows. Deep black mascara pigments make your eyes expressive, your eyelashes become impressive and attractive.

12 ml

THE EFFECT
OF A MILLION
LASHES!



MILLION LASHES MASCARA Million Lashes Volume

- creates a three-dimensional look
- controls lashes to their fullest extent
- effectively lengthens and curls
- doesn't fall off
- no lumps or clumping
- convenient brush for application

12 ml

LASH LAMINA-
TION EFFECT!



LUXURY HYALURON Mascara Lamination

Designed to increase lash volume and length. Legendary silicone brush with tapered tip allows you to distribute the mascara evenly on your lashes, separating them and creating a laminating effect.

12 ml

EFFECT:
VOLUMINOUS,
LONG,
SEPARATED
LASHES!



MASCARA
LUXURY COLLAGEN

Volume • Length • Strengthening

- collagen, vitamin E – strengthen eyelashes and promote their growth
- almond and jojoba oils – restore the structure of eyelashes
- berry and rice waxes – make the mascara plastic, allowing you to apply it layer by layer
- mascara does not fall off or smudge
- lint brush perfectly separates lashes

12 ml

LIGHT OR
EXPRESSIVE
MAKE-UP –
THE CHOICE
IS YOURS!



**MS. PERFECTION ALL IN ONE
MASCARA**

- All in One effect is volume + length + separation
- coats and thickens each lash
- perfect for daily make-up
- fixes the curve and preserves it during the day
- a silicone wand helps apply the mascara cover evenly from roots to tips
- dries quickly on the lashes
- **contains jojoba oil** that strengthens and moisturizes your lashes

Made with Chromavis ingredients (Italy)

12 ml

PANORAMIC
EFFECT,
FAN VOLUME
AND NO ADHESION!



**PANORAMIC LASHES
CASTOR OIL MASCARA**

- wide open eyes effect
- rich colour and expressive volume
- a silicone brush is perfectly suitable for making your lashes separated and long
- easy and even application
- non-flaking and non-smudging
- **contains castor oil** that regenerates lashes structure and stimulates their growth

Made with Chromavis ingredients (Italy)

12 ml

LONG BUSHY
CURLY LASHES
EFFECT!



MEGA VOLUME LONG BUSHY CURLY EYELASHES EFFECT MASCARA

- perfect curve and volume along the lash contour
- deep colour
- a silicone wand lifts up and curls up your lashes
- without weighing your lashes down
- non-flaking and non-smudging
- contains a combination of waxes and gum

Arabic

Made with Chromavis ingredients (Italy)

10 ml

DOLL FALSE
LASHES EFFECT!



4D MEGA EFFECT OF FALSE LASHES MASCARA

- false lashes effect
- boosts lashes thickness and extremely lengthens them
- curls your lashes up and opens up your eyes
- thick bristle wand perfectly separates the lashes
- without weighing your lashes down
- no clumps, no lash adhesion

Made with Chromavis ingredients (Italy)

10 ml

4 EFFECTS
IN ONE MASCARA

1D – volume
2D – length
3D – curling
4D – colouring

FLIRTATIOUS
LASHES –
IN ONE STEP!



BELITA YOUNG FLASHES ASTONISHING VOLUME INFINITE LENGTH MASCARA

- ultra volume and incredible length
- deep black colour
- thick bristle wand covers even the tiniest and unseen lashes
- no adhesion, no clumps
- **contains beeswax** that creates a thin coating which protects your lashes from damage

Made with Chromavis ingredients (Italy)

16 ml



EYE STYLER HYPNOTIC

Long Lasting 12h Pen Eyeliner

- thin applicator that helps control line thickness
- **12-hour incredible endurance**
- **matte finish**
- water resistance
- deep colours
- non-smudging
- **ophthalmologist tested**

Made by A. W. Faber Castell (Germany)
at JV BELITA Ltd. request



PERFECT EYELINER LONG LASTING 12h

Mechanical Contour Pencil

- **12 hours of incredible resilience**
- vibrant and intense colours
- no scratching, no damage to gentle eyelid skin
- no smudging
- creates both thin and crisp lines
- no sharpening
- **ophthalmologist tested**

Made by A. W. Faber Castell (Germany)
at JV BELITA Ltd. request



FELT TIP EYELINER
tone 589 black

MECHANICAL EYELINER
tone 590 black

LUXURY

FELT TIP EYELINER

- thin applicator-flomaster
- glossy finish
- clear and quick application
- does not spread or smudge
- high concentration of coal-black pigments
- convenient format

MECHANICAL EYELINER

- emphasizes the eyes, giving them an expressive look
- does not require sharpening
- easy to apply and quick to fix
- rich black color

Made by A. W. Faber Castell (Germany)
at JV BELITA Ltd. request



EYESHADOW PRIMER

- eyeshadow doesn't run and smudge
- enhances eyeshadow brightness
- evens the eyelid skin surface out
- does not go into eyelid crease
- colourless

6 ml



EYESHADOW BASE

- prepares eyelid skin for make-up
- improves make-up resistance
- preserves make-up brightness during the day
- eyeshadow doesn't run and smudge
- transparent base is invisible on skin surface
- doesn't dry eyelid skin
- suitable for all skin types

15 ml



LOOK AT THE WORLD
WITH EYES WIDE OPEN!



PROLUXURY

KAJAL TATTOO EYELINER PROLUXURY

- accentuates eye shape and provides with expressive make-up
- **perfectly suitable for gentle and sensitive eyelid wet line**
- suitable for shadow make-up and tracing lash line
- **dermatologist tested**
- **ophthalmologist tested**
- fragrance free

Made by JOVI S.A. (Spain) at JV BELITA Ltd. request



COMPACT EYESHADOWS

- evenly applied and perfectly shaded
- non-flaking
- doesn't smear in the middle of your eyelid
- easily layered and blended, doesn't clump



* shimmering shade
** matte shade



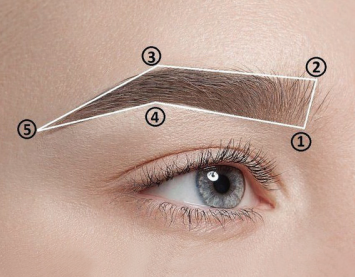
GLITTER & CHROME LIQUID EYESHADOWS

- shimmering texture creates a sparkling and glittering effect
- non-clumping, non-flaking
- easily and flawlessly shaded
- perfectly layered
- doesn't smear, do not dim while wearing
- keep colour brightness and glow
- notable for high pigmentation
- a classical and easy to use applicator





EYEBROWS



LUXURY

BEST
SELLER



596
Light-Brown



595
Grey-Brown



594
Brown



593
Grey-Black

POWDER EYEBROW PENCIL

- a powder-on-eyebrows effect makes your eyebrows more bushy
- emphasizes your eyebrow shape and colour
- no further shading
- no sharpening
- natural shades

Made by A. W.Faber Castell (Germany)
at JV BELITA Ltd. request

MAKE YOUR PERSONALITY
STAND OUT!



LAB
COLOUR



20 blonde



21 chocolate



22 deep brown

EYEBROW TINTED GEL

- secure eyebrow hair fixation
- **effectively fills up gaps and makes your eyebrow visually bushy**
- rich pigment
- styler brush for accurate make-up application
- helps create beautiful curve
- natural shades for brunettes and blondes
- compact design for an opportunity to have an eyebrow make-up product at hand

4 ml

EYEBROWS

EYEBROW PENCILS / GELS



COLOURLESS EYEBROW FIXING GEL

- creates a desired shape even for the most unruly eyebrow hair
- no visible coating left after application
- visually enhances eyebrow volume
- no brow hair adhesion, no wet effect
- suitable for all eyebrow colours
- styler brush for convenient make-up application
- **contains provitamin B5 (panthenol) which nourishes and protects your eyebrows, strengthens and makes them radiant.**

6,7 ml



EYEBROW AND EYELASH KERATIN GEL

- carefully brushes the hair and shapes your eyebrows up
- a formula with keratin protects and strengthens hair structure
- ultralight gel structure
- transparent texture is unseen on all eyebrow and lash colours
- suitable for daily usage
- **contains hydrolyzed keratin which regenerates damaged areas and thickens hair structure and builds on its strength**

6,7 ml



Practical tips:

In the morning apply the gel to eyebrows for light fixation and shaping them up. At night apply keratin gel to eyebrows and lashes hair for their strengthening and regeneration. Perfectly suitable for those who has unruly styling resistant eyebrow hair as well as those whose new eyebrow hair grows badly or it is thin.



STRENGTHENING BALM FOR EYELASHES AND EYEBROWS with Castor Oil

- gentle lashes and eyebrows care
- strengthens damaged hair structure
- makes your lashes thick and long
- regenerates hair growth
- transparent texture
- suitable for daily usage

6 ml

Active ingredients:

Castor oil strengthens, regenerates and stimulates lashes and eyebrows hair growth.

D-panthenol, Acorus calamus extract and glycerin help to regenerate lashes and eyebrows hair structure, and prevent their loss.

EMortal® Pep wakes up sleeping hair follicles and helps lashes grow.



LASH GROWTH ACTIVATOR SERUM

- activates lashes growth and prevents their falling out
- provides lashes with extra volume and density
- protects your lashes from a negative effect of long lasting mascara
- nourishes and strengthens the hairs
- no weighing your lashes down
- suitable for damaged, brittle and scanty lashes
- a thin brush for easy application to eyelash roots

4 ml

Active ingredients:

Capixyl™ (a complex of biomimetic signal peptide and an extract of red clover flowers): increases lashes density, stimulates their growth, strengthens and prevents their falling out.

Panthenol helps regenerate lashes structure and make them firm and flexible.

Caffeine provides new lashes growth.

Arginine improves nutrient and active ingredients enrichment of lashes roots.

Castor oil strengthens and prevents lashes from falling out, makes them strong and glossy.

Capixyl™ effect on eyelashes

45.5% more new lashes*

45% thicker lashes*

up to +27% more dense lashes*

up to +0.7 mm longer lashes*

100% your own lashes

* If the serum is applied 2 times a day, the effect is achieved in 8 weeks. The effectiveness is proved by Lucas Meyer, France.



LIPS

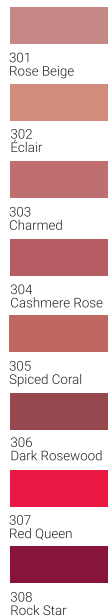


Mattefix

MATTE FINISH

**MATTEFIX
MATTE LIQUID LIPSTICK**

- flawless matte finish
- relatively high long lasting effect
- perfect application without bleeding
- light quick-drying texture
- no bleeding over lip contour
- no getting into lip cracks



Plump & Shine

SHEEN FINISH

**PLUMP & SHINE
LIP GLOSS**

- visually increases lip volume
- light sheen cover
- conceals tiny lip peeling
- beautiful wet gloss
- fills in small fine lines



My
Lip
Balm
♥



contains
oils

BEST
SELLER



MY LIPBALM LIP GLOSS BALM

- **Active peptide** stimulates collagen synthesis and increases lip volume
- **Apricot and coconut oils** moisturize, smooth and regenerate damaged and split lip skin
- **UV rays and photo ageing protection**
- **Overdrying and peeling protection**

15 ml

A caring formula of **My Lipbalm Lip Gloss Balm** provides your lips with intensive care and light radiant shades.

7 delicate lip gloss shades emphasize natural lip colour, create sheen radiance and appealing wet gloss.

YOUR LIPS
LOOK HEALTHY
AND RADIANT!





SOFT AND
SMOOTH LIPS

5 SUPER
OILS:

1. argan
2. coconut
3. almond
4. castor
5. shea butter



BEST
SELLER

Sweet Lips

SOS RECOVERY LIP BALM EXPRESS CARE

5 SUPER OILS:

- argan
- coconut
- almond
- castor
- shea butter

- lip skin regeneration
- instant nourishment
- UV rays and photo ageing protection

15 ml



WELL CARED
LIPS

5 EFFECTS
AT A TIME:

1. UV rays and photo ageing
PROTECTION
2. MOISTURIZING
3. NOURISHMENT
4. REGENERATION
5. REJUVENATION



BEST
SELLER

SPF
15

Sweet Lips

BB LIP BALM PERFECT CARE 5 IN 1 SPF 15

The formula based on natural oils

Castor oil moisturizes, softens, intensively nourishes and smooths your lips out.

Coconut oil regenerates damaged and split lip skin, retains firmness and elasticity, restores incredible lip softness and smoothness.

Apricot oil slows down lip skin ageing process and preserves its beauty and youth.

15 ml



BOOSTS LIP
VOLUME 40%

3D EFFECT
FOR BEAUTIFUL
LIP VOLUME

captivating volume,
attractive gloss,
gentle care and moisturizing



BEST
SELLER

Sweet Lips

3D EFFECT LIP BALM FOR BEAUTIFUL LIP VOLUME

MAXI-LIP active peptide

- boosts lip volume 40.7% on average*
- reduces peeling 60%*
- increases smoothness 70%*

** if the lip balm is applied 3 times a day, the effect will be achieved in 29 days. The effectiveness is proved by Sederma, France.*

Castor and coconut oils

- nourish, moisturize and soften lips skin
- prevent over drying and peeling
- help skin firmness, smoothness and elasticity preservation

15 ml



LIP BALM



SOFTENING LIP BALM

HEMP OIL +
5% COCONUT OIL

INTENSIVE CARING FORMULA
WITH HEMP AND COCONUT OILS:

- softens and regenerates dry lips
- intensively and permanently moisturizes them
- increases lip smoothness

15 ml



NOURISHING LIP BALM

SHEA BUTTER +
5% COCONUT OIL

INTENSIVE CARING FORMULA
WITH SHEA BUTTER AND COCONUT OIL:

- nourishes and regenerates lips skin
- enriches lips skin with essential oils
- prevents your lips from moisture loss

15 ml



PROTECTIVE LIP BALM

ALMOND OIL +
5% COCONUT OIL

INTENSIVE CARING FORMULA
WITH ALMOND AND COCONUT OILS:

- protects your lips from crusting and dryness
- prevents from peeling
- regenerates and nourishes lips skin

15 ml



**LIP GLOSS
Oil**



contains
oils

- 01 Pink Grape
with grape oil
- 02 Gold Argan
with argan oil
- 03 Red Peach
with peach oil



**CAN BE APPLIED
OVER MATTE
LIPSTICK COVER**

LUXURIOUS LIP GLOSS OIL

- contains oils which keep maintain an optimal skin water balance
- lip nourishment and comfort
- no lip dehydration
- prevents from cracking and irritations
- natural healthy shade
- **suitable for daily usage**

5 ml



**LiP
BOOSTER
HYALURON**



**HYALURON LIP BOOSTER
GLOSS ELIXIR FOR LIP VOLUME**

- plump moisturized lips at a time
- instant visual volume
- produces a wet effect on lips surface
- **a finish with a liquid glass effect**

ACTIVE INGREDIENTS:
Hyaluronic acid – a polysaccharide which helps maintain moisture and stimulates lip collagen and elastin syntheses.

5 ml



PROLUXURY

TATTOO LIP LINER

- soft and comfortable texture
- perfectly traces natural lips contour
- suitable for covering all the surface of your lips
- **jojoba oil** nourishes and softens lips skin, maintains their moisture level
- * Dermatologically tested
- * Raw material of 100% natural origin
- * Fragrance-free

Made by JOVI (Spain) at JV BELITA Ltd. request





FACE

FOUNDATIONS	3-6
BB CREAMS	7-8
MAKE-UP PRIMERS	8-10
CORRECTORS	11
CONCEALERS	11-12
FACE POWDER / STROBING	13
HIGHLIGHTERS / LUMINIZERS	14
BLUSHES	15
MAKE-UP FIXING SPRAY	15



EYES

MASCARAS	17-20
EYELINERS, EYE STYLERS	21, 23
EYESHADOW PRIMER	22
EYESHADOWS	23



EYEBROWS

EYEBROW PENCILS / GELS	25
EYELASHES AND EYEBROWS CARE	26-27



LIPS

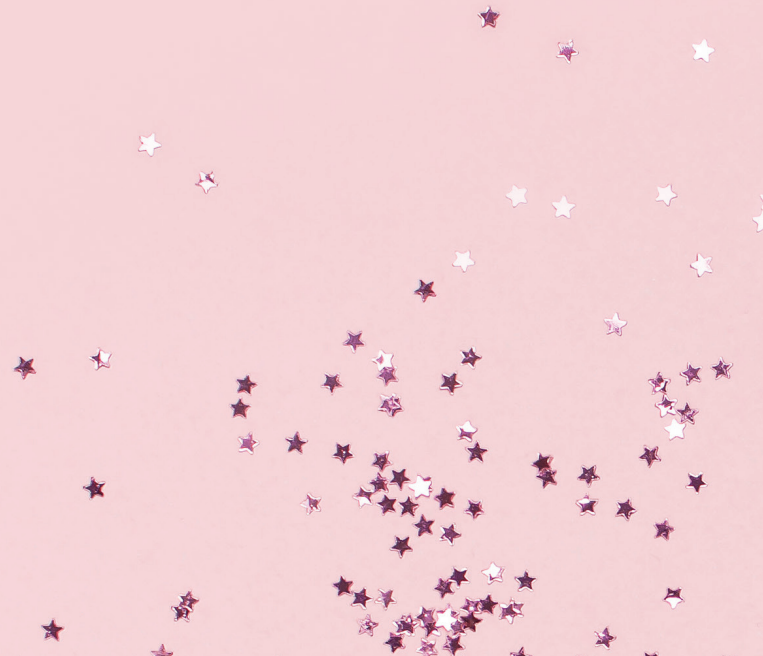
LIPSTICKS / LIP GLOSSES	29
LIP BALM	30-32
LIP OILS / VOLUMIZERS	33
LIP LINERS	34

BI&LITA[®]



NOTES

NOTES



BI&LITA[®]

JV BELITA Ltd.
29a Dekabristov str., 220089, Minsk, Belarus
tel.: +375(17)3007100
www.belita.by